

# MONTHLY MEMBERSHIP PROGRESS REPORT

LOCATION INDIA

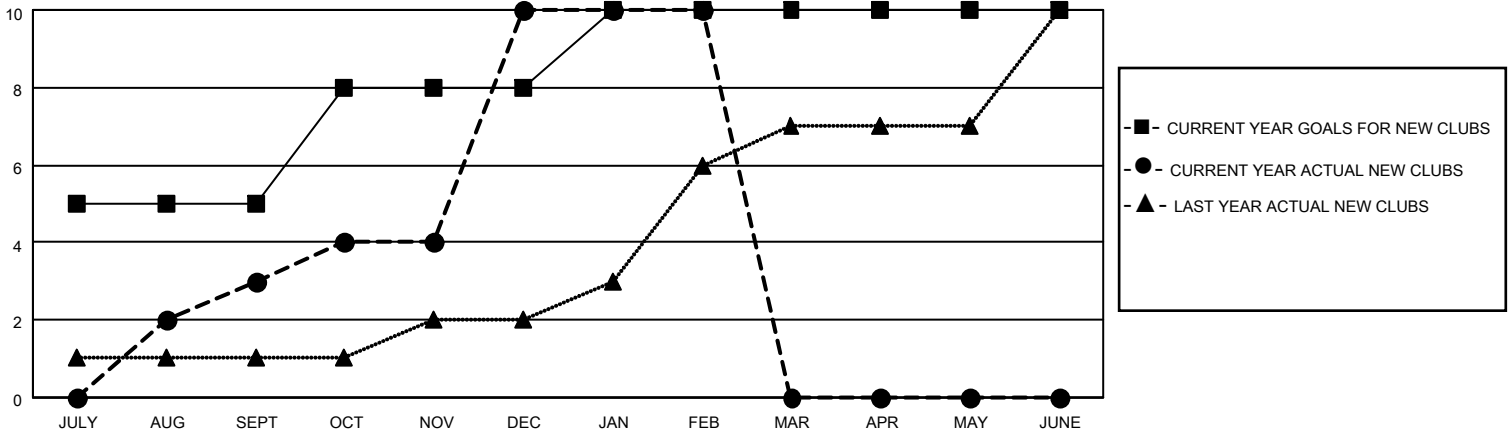
District 322C3

Results as of: 2/28/2021

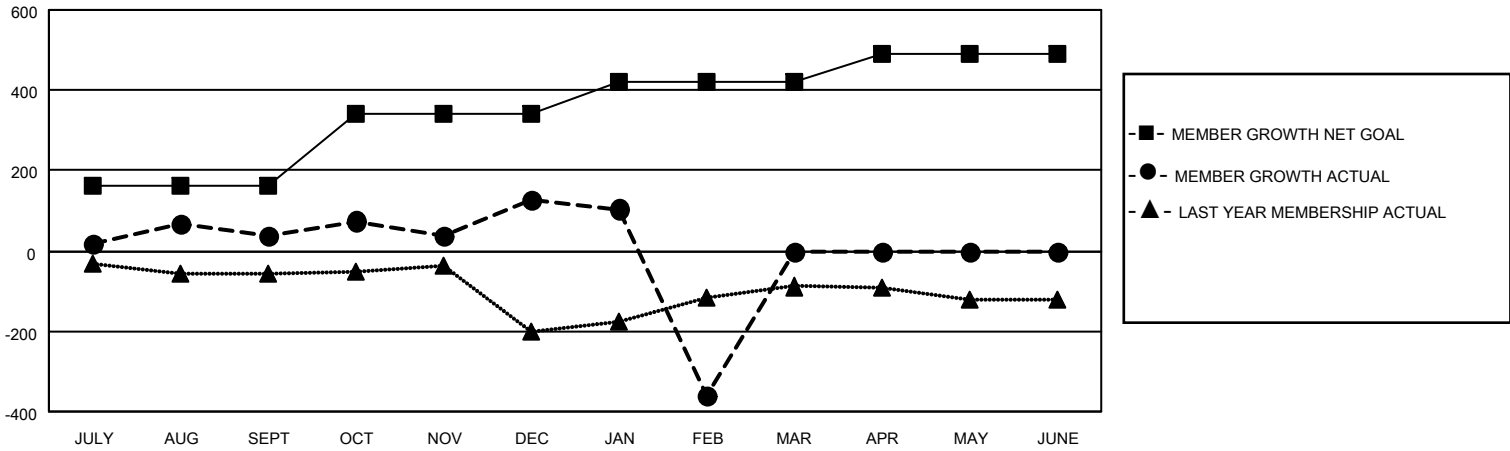
| Clubs                 |               |           |               |
|-----------------------|---------------|-----------|---------------|
| RESULTS FOR 2020-2021 |               |           |               |
| QUARTER               | NEW CLUB GOAL | NEW CLUBS | DROPPED CLUBS |
| JULY/AUG/SEPT         | 5             | 3         | 0             |
| OCT/NOV/DEC           | 3             | 7         | 0             |
| JAN/FEB/MAR           | 2             | 0         | 23            |
| APR/MAY/JUNE          | 0             | 0         | 0             |

| Members               |                        |                      |   |
|-----------------------|------------------------|----------------------|---|
| RESULTS FOR 2020-2021 |                        |                      |   |
| QUARTER               | MEMBER GROWTH NET GOAL | MEMBER GROWTH ACTUAL | DROPPED MEMBERS ACTUAL<br>(including transfers) |
| JULY/AUG/SEPT         | 160                    | 113                  | 72  |
| OCT/NOV/DEC           | 180                    | 341                  | 250   |
| JAN/FEB/MAR           | 80                     | 14                   | 496   |
| APR/MAY/JUNE          | 70                     | 0                    | 0   |

**GOALS AND ACTUAL NEW CLUBS CUMULATIVE**



**GOALS AND ACTUAL MEMBERS CUMULATIVE**



**DROPPED CLUBS: 23**

**53 CLUBS OF 116 ADDED 1 OR MORE NEW MEMBERS**

**GENDER DISTRIBUTION**

MALE            2,338 (74.32%)  
 FEMALE        808 (25.68%)

**DROPPED MEMBERS**

[CLICK HERE FOR CUMULATIVE MEMBERSHIP DATA](#)

|                |            |
|----------------|------------|
| DECEASED       | 13         |
| CLUB CANCELLED | 467        |
| OTHER          | 338        |
| <b>TOTAL</b>   | <b>818</b> |

|                                 |       |
|---------------------------------|-------|
| TOTAL FAMILY UNIT MEMBERS       | 2,067 |
| FAMILY MEMBERS PAYING HALF DUES | 1,315 |